



Scheda tecnica indumento/Garment technical data sheet



| Identificazione articolo/Item identification | | | | | |
|--|--|--|---|-----------------------------------|---------------|
| Cod. comm.le Industrial Starter/ IS commercial item code: | 08184 | Cod. art. fornitore/ Supplier item code*: | 8184 | Cod. fornitore/ Supplier code: | 101041 |
| Cod. colore Industrial Starter/ Industrial Starter colour code: | 012 (giallo fluo/yellow fluo) | <input checked="" type="checkbox"/> | Articolo del catalogo/Item from catalogue | | |
| | | <input type="checkbox"/> | Articolo personalizzato/Customized item | | |
| | 032 (arancio fluo/orange fluo) | | Codice cliente/Customer code: | N/A | |
| Nome articolo/Item name: | Polo Alta Visibilità / Hi Vi Polo Shirt | | | | |

| Descrizione tecnica dell'articolo/Technical item description | | | |
|--|---|---|--|
| | Composizione/ Fabric composition | Colore/colour (Pantone) | Peso del tessuto/ Fabric weight [g/m ²] |
| Tessuto esterno / Outer Shell | 100 % poliestere piquè / 100% polyester piquè | Giallo & Arancio Fluo / Yellow & Orange Fluo | 160 |
| Accessori/Accessories: | bande retroriflettenti su torace e spalle/ chest and shoulder reflective bands | | |
| Loghi e ricami/ Logos & embroideries: |  | | |
| Taglie/Sizes: | S – M- L- XL- XXL- XXXL | | |
| Imballo/Packages: | n. 15 pz in un cartone imbustati singolarmente / n. 1 piece per polybag, n. 15 pcs per export carton | | |
| Istruzioni lavaggio/Care label: |  | | |

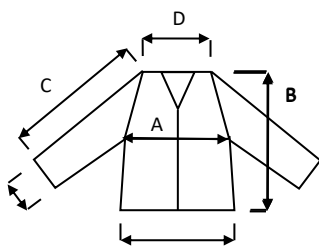
| Conformità alle norme CE/Conformity with EC standards | | | |
|---|---|--|---|
| Cat.DPI/ PPE Category: | II | Norme CE e livelli di protezione/ EC standards and protection levels: | EN ISO 20471 : 2013 (Class 2) EN 13688 : 2013 |
| Certificato d'esame Ue di Tipo n° / UE type-examination certificate No.: | In progress | | Data/Date: - |
| Ente notificatore / Notified body: | AITEX – Istituto Tecnologico Textile | | N°/ No : 0161 |
| Lingue Nota Informativa/ Manufacturer's notes languages: | IT,ES, SI,SK, PT,PL,LT,LV,HU,GR,DE,FR,EE,EN,CZ,HR,SRP,RO | | |

Scheda tecnica indumento/Garment technical data sheet



| | Misure delle taglie/Size measurements [cm] | | | | | |
|--------------------------------|--|----|----|----|-----|------|
| Taglia/Size: | S | M | L | XL | XXL | XXXL |
| A. Torace ½ /Chest ½ : | 50 | 55 | 59 | 62 | 67 | 72 |
| B. Lunghezza tot./Back lenght: | 65 | 65 | 68 | 68 | 71 | 74 |
| C. Manica/Sleeve: | 24 | 24 | 24 | 26 | 26 | 26 |
| D. Spalle/Shoulder | 49 | 52 | 55 | 59 | 61 | 63 |

Disegno e foto/Drawing and photo



Vicenza, 01/06/2020

Resp. acquisti/Purchasing manager